



CITY OF SAN ANTONIO
EDWARDS AQUIFER
PROTECTION PROGRAM

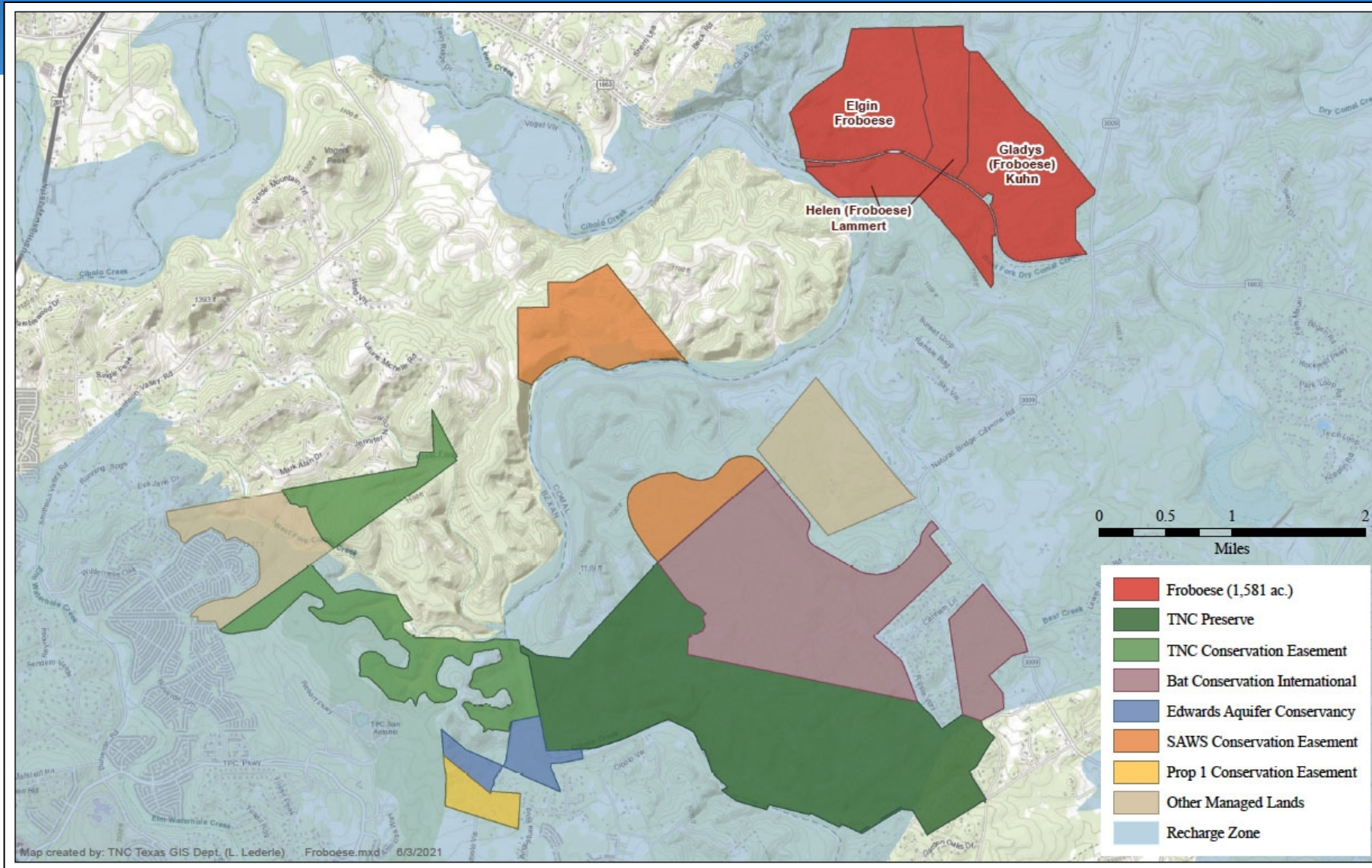
Conservation Advisory Board

October 27, 2021



Froboese Ranches
Galewsky, Pearce and Kolinek Ranches
Swain Ranch

Froboese Ranches (1,581 Acres) Comal County



Froboese Ranches (1,581 Acres) Comal County

Froboese Ranches

- Three tracts owned by Froboese family members; east tract contains West Fork Dry Comal Creek; other tracts front on Cibolo Creek
- All within Recharge Zone, have karst features
- Near Natural Bridge Caverns, SAWS easements, Bracken Bat Cave and Cibolo Bluffs Preserves (owned by TNC/BCI; funded by EAPP, Bexar County, EAA, ACUB)
- EAA reports found tracts to have very high water quality and quantity benefit

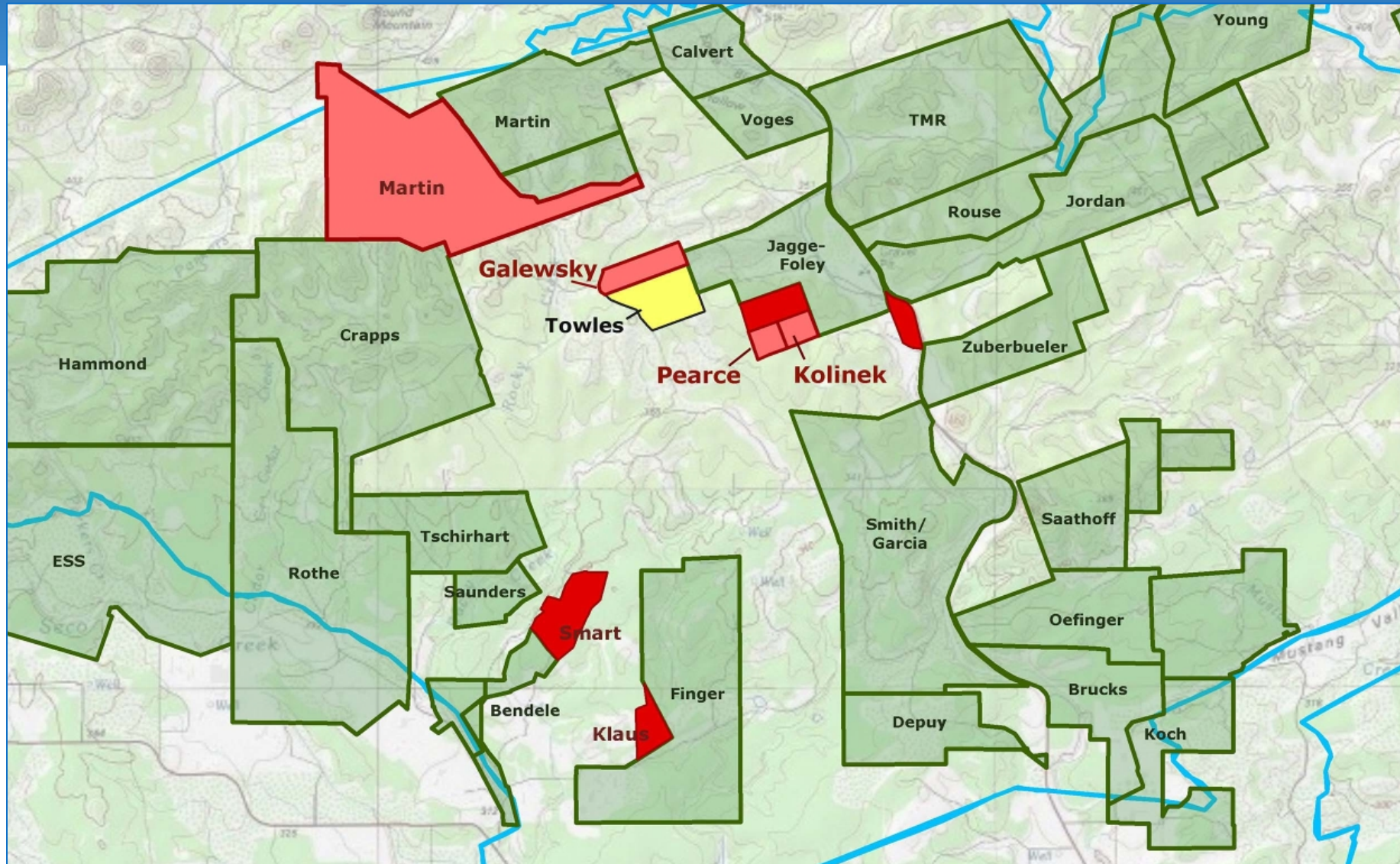
➤ **Requesting Stage 1B approval (appraisal)**

Froboese Ranches (1,581 Acres) Comal County





Galewsky, Pearce & Kolinek Ranches (248 Acres) Medina County

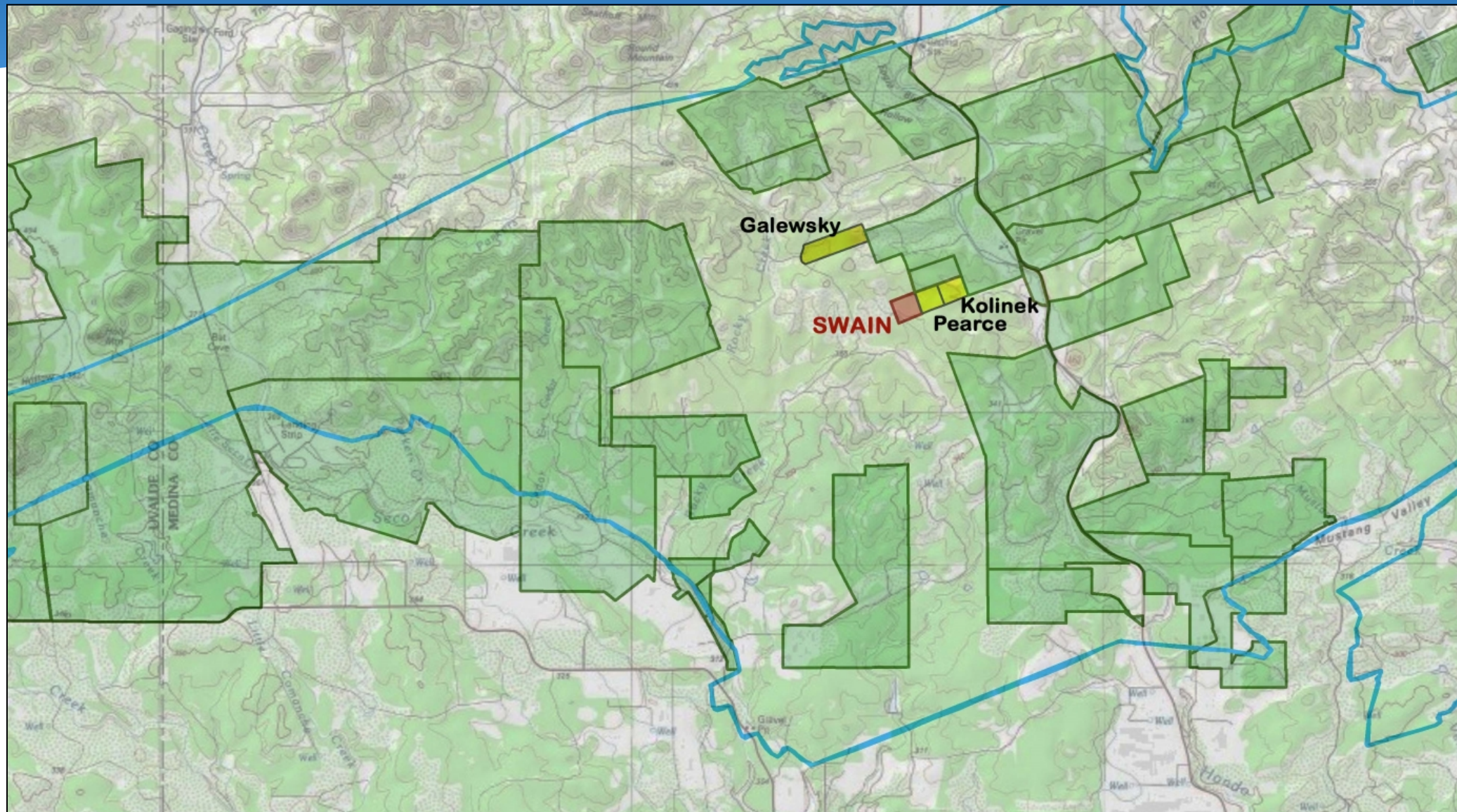


Galewsky, Pearce & Kolinek Ranches (248 Acres) Medina County

- Several parcels adjoining Jagge-Foley Ranch east of Domino Ranch
 - Galewsky (135 acres)
 - Pearce (57 acres)
 - Kolinek (56 acres) and others
- EAA Geological Assessment reports high water quality and quantity benefits for all three properties
- Surveys and Environmental reports completed
- **Requesting Final Approval**



Swain (57.469 Acres) Medina County



Swain

- On county road adjacent to Pearce and Kolinek
- In Recharge Zone

➤ **Requesting Stage 1 approval**